

September 30, 2021

Site Investigations Along Waterfront

Contract #: 9117-20-7024

Expected Start Dates: Early October 2021

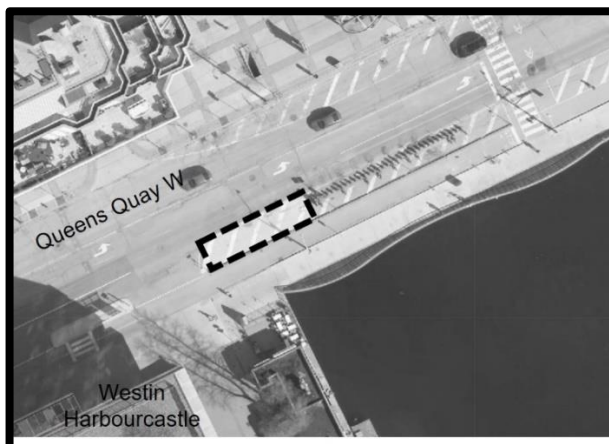
Expected End Dates: Winter 2023

**Timeline is subject to change.*





In preparation for the Inner Harbour West Tunnel of the Don River and Central Waterfront Wet Weather Flow System, the City of Toronto will be carrying out site investigations to determine soil, rock and groundwater conditions, and confirm below ground utilities at multiple locations across the downtown waterfront, including the south side of Queens Quay West, at Yonge Street in the protected boulevard. Boreholes and monitoring wells for groundwater conditions will be installed between July to December, monitored for 18 months and removed by Winter 2023. These boreholes are required to develop engineering designs for future construction of the Inner Harbour West Tunnel.

This project is part of the Council-approved 2017-2026 Capital Works Program. More details are available on the full site investigation notice at [Toronto.ca/drcw-project](https://toronto.ca/drcw-project)

MAP OF WORK AREA: YONGE STREET & QUEENS QUAY WEST



WHAT TO EXPECT

Icon	Description
	Work Hours: Work will take place between 7:00 a.m. and 7:00 p.m., Monday to Friday, with work after hours and on Saturdays as required. This work will comply with the City's Noise Bylaw.
	Drilling and Dust: A drill rig will excavate eight inch diameter boreholes up to 70 metres below ground and groundwater monitoring wells will be installed. Drilling will take approximately three to four weeks per borehole. Dust will be minimized.
	Road Access: No traffic impacts are anticipated. Some sites are in the City's Right-of-Way and include parking/lay-by lanes. Access for emergency vehicles will be maintained at all times. Parking and idling of construction vehicles will not be permitted on streets. Sidewalk & Path Access: There will be minimal impacts at some sites. Detours or use of alternate routes will be available to redirect pedestrians and cyclists. This work is not expected to impact the Bike Share kiosk.
	Traffic Management: Unloading and loading equipment may result in temporary disruption to local traffic. In order to complete the work effectively and in a safe manner, some pedestrian and vehicle traffic restrictions will be necessary.

NEED MORE INFORMATION?

If you have questions about the upcoming work, please contact us and quote **9117-20-7024**.

Point of Contact	Information
Project Manager	Caroline Kaars Sijpesteijn, caroline.kaarssijpesteijn@toronto.ca , 416-338-7052
TTY Hearing Impaired Service	416-338-0889 (Daily, 8 a.m. to 5 p.m., closed holidays)
General inquiries	311
Website	toronto.ca/drcw-project

Thank you for your patience. Building a great city takes time. Better infrastructure for all of us is worth the wait.